

Assurant Vehicle Care[®]

Maxi Mechanical Breakdown Insurance

Summary of Cover

Qualifying Vehicles

Vehicles that qualify for cover under Maxi Mechanical Breakdown Insurance include:

- Petrol, Diesel, BEV, PHEV and Hybrid vehicles
- With an odometer reading of up to 300,000 km at the start of the policy, and
- Up to 20 years old at policy expiry

Claim Limits

The maximum claim limit is:

- The choice of \$6,000 or \$3,000
- Total maximum liability of the policy is the vehicle's Current Market Value

Policy Benefits

- Benefits Package - up to \$500 per claim for any combination of accommodation, travel, and vehicle repatriation costs
- Factory Audio
- Electric Mirrors
- Door Locks
- Sunroofs

Optional Benefits

- Roadside Assistance
- Additional Towing Allowance up to \$150 per claim
- Consumables Cover of up to \$300 per claim
- Diagnostic Cover of up to \$300 per claim per claim
- Cover for Uber/Taxi (only valid for EV/ Hybrid vehicles)

Customer Obligations

- Regular servicing of the vehicle is required to maintain the integrity of the vehicle and cover under the policy
- Please ensure that the vehicle is serviced in line with the manufacturer's requirements and intervals
- Where manufacturer requirements are not known, please refer to the policy wording for a full list of requirements



This document is a summary of cover and does not form part of the Insurance Policy. Limits apply to some items; please refer to the Insurance policy for terms and conditions.

Assurant Vehicle Care®

Components covered under Maxi Mechanical Breakdown Insurance

ENGINE

Cylinder Head
Head Gasket
Engine Block
Oil Seals & Gaskets
Camshafts
Camshaft Followers
Hydraulic Lifters
Push rods
Rocker Arms
Rocker Shafts
Valve Springs
Valves & Guides
Pistons
Piston Rings
Gudgeon Pins
Oil Filter Housing
Timing Chain
Timing Chain Tensioner
Timing Gears
Pulleys
Connecting Rods
Bearing Shells
Crankshaft
Oil Pump
Oil Pressure Relief Valve
Oil Pump Drive Gear & Shaft
Balance Shaft
Inlet Manifold
Oil when replaced at time of claim (Refer to Policy Wording)

FUEL SYSTEM

Air Flow Meter
Fuel Flow Sensor
Fuel Gauge Sender Unit
Fuel Injector Pump
Fuel Injectors
Fuel Lines
Fuel Pressure Regulator
Fuel Pressure Sensor
Fuel Pump
Glow Plug Relay
Glow Plugs
Lift Pump
Throttle Position Switch

COOLING SYSTEM

Engine Cooling Fan Motor
Heater Fan Motor
Heating Matrix
Oil Cooler Radiator
Seals & Gaskets
Temperature Sensor
Thermostat
Thermostat Housing
Viscous Fan Coupling
Water Pump

PROPSHAFT

Bearings
Couplings
Universal Joints
Constant Velocity Joints

MANUAL TRANSMISSION

Baulk Rings
Casing
Extension Shaft & Gears
Gear Lever & Linkages
Internal Bearings
Internal Shafts & Gears
Oil Seals & Gaskets
Selectors
Solenoids & Sensors
Synchro Hubs
Synchro Rings
Temperature Sensor
Master Cylinder
Slave Cylinder
Hydraulic Pipes & Hoses
Clutch Fork
Pedal Box Assembly
Oil when replaced at time of claim (Refer to Policy Wording)

AUTOMATIC TRANSMISSION

Bands & Belts
Casing
Clutches
Internal Bearings
Inhibitor Switch
Electronic Control Module
Oil Pump
Gears
Internal Shafts & Drums
Torque Converter
Flexi Plate
Valve Body
Shift Solenoids
Speed Sensors
Oil Cooler
Oil Seals & Gaskets
Gear Lever & Linkages
Oil when replaced at time of claim (Refer to Policy wording)

DIFFERENTIAL

Axles & Half Shafts
Casing
Clutches
Crown Wheel
Internal Bearings & Bushes
Limited Slip Assembly
Oil Seals & Gaskets
Pinion Gear
Side Gears
Spider Gears
Oil when replaced at time of claim (Refer to Policy Wording)

REAR SUSPENSION

Anti-Roll Bars
Axle Bearings
Springs
Wheel Bearings

FRONT SUSPENSION

Anti-Roll Bars
Ball Joints
Springs
Stub Axles
Wheel Bearings

ELECTRICAL

Alternator
Starter Motor
Ignition Coils
Factory Fitted Audio & Visual
Window Regulator
Window Regulator Motor
Electric Seat Motor
Voltage Regulator
Body Control Module
Electronic Ignition Module
Engine Control Module
Windscreen Wiper Motor
Windscreen Washer Motor
Convertible Roof Motor
Sunroof Motor
Transmission Control Module
Instrument Cluster
Column Stalk
Switches
Fuse Box
Horn

AIR CONDITIONING

Compressor
Condenser
Cooling Fan Motor
Electric Heater Element
Evaporator
Hoses & Pipes
Receiver Drier
Switches & Sensors
TX Valve

BRAKING SYSTEM

ABS Accumulator
ABS Module
ABS Pump
Disc Calipers
Equalizing Valves
Hand Brake Assembly
Master Cylinder
Pedal Box Assembly
Solenoids & Sensors
Vacuum Booster
Wheel Cylinders

TRANSFER BOX - 4 WHEEL DRIVE

Casing
Drive Chain
Internal Bearings
Internal Shafts & Gears
Oil Seals & Gaskets
Selector Shafts & Forks
Speed Sensor & Reluctor Wheel
Viscous Coupling
4WD Synchronizer
Oil when replaced at time of claim (Refer to Policy Wording)

SRS SYSTEM

SRS Air Bag ECU & Module
SRS Air Bag Sensors
SRS Air Bag Clock Springs

STEERING

Steering Column
Rack & Pinion
Steering Box
Steering Column Tilt Mechanism
Universal Joints
Steering Idler
Steering Angle Sensor
Power Steering Pump
Power Steering Motor
Tie Rods
Track Rods
Power Steering Fluid Reservoir
Oil Seals & Gaskets
Power Steering Unit
Hoses & Pipes
Oil when replaced at time of claim (Refer to Policy Wording)

FRONT WHEEL DRIVE ASSEMBLY

Inner Constant Velocity Joints
Outer Constant Velocity Joints
Drive Shafts
Final Drive Assembly
Hub Assemblies
Internal Bearings
Internal Shafts & Gears
Oil Seals & Gaskets
Transfer Casing
Transfer Gears
Oil when replaced at time of claim (Refer to Policy Wording)

TURBO UNIT

Turbine Compressor
Turbine Casing
Compressor Casing
Internal Bearings
Oil Seals & Gaskets
Pressure Relief Valve
Oil Feed Lines
Boost Control Valve
Boost Sensors
Waste Gate
Waste Gate Actuator
Intercooler

PARTS NOT COVERED

include Battery, exhaust system, wheels & tyres, cosmetic items, glass, struts, shock absorbers, seat mechanisms, brake shoe linings, disc pads and rotors, clutches and flywheel assemblies due to wear & tear. For full list of exclusions please refer to the policy wording.



Assurant Vehicle Care[®]

Optimum Mechanical Breakdown Insurance

Summary of Cover

Qualifying Vehicles

Vehicles that qualify for cover under Optimum Mechanical Breakdown Insurance include:

- Petrol and Diesel vehicles
- With an odometer reading of up to 225,000km at the start of the policy, and
- Up to 20 years old at policy expiry

Claim Limits

The maximum claim limit is:

- Current Market Value for Cat 1 vehicles with an odometer reading up to 150,000km
- The choice of \$10,000 or \$8,000 for all other qualifying vehicles
- Total maximum liability of the policy is the vehicle's Current Market Value

Policy Benefits

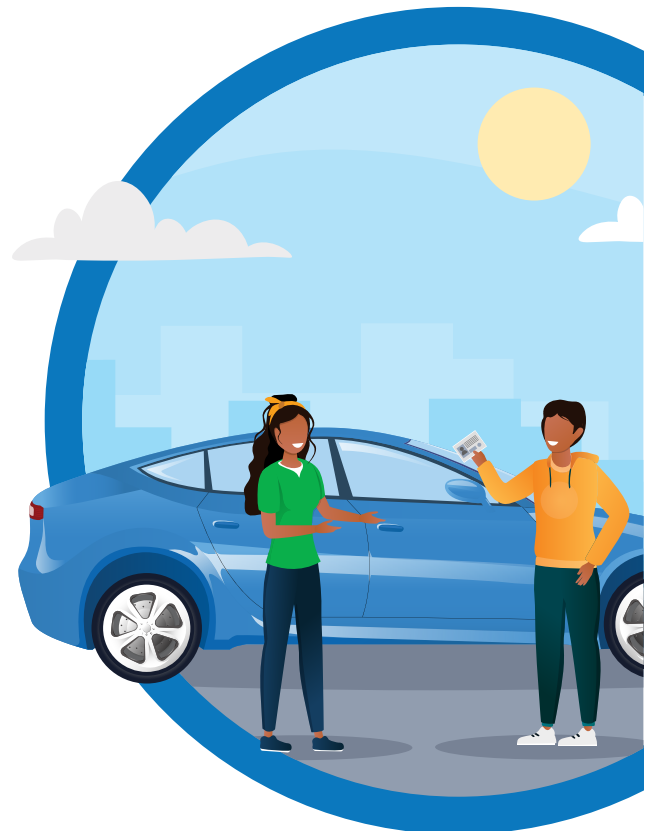
- Benefits Package - up to \$1000 per claim for any combination of accommodation, travel, and vehicle repatriations costs
- Factory Audio
- Electric Mirrors
- Door Locks
- Sunroofs

Optional Benefits

- Roadside Assistance
- Additional Towing Allowance up to \$150 per claim
- Consumables Cover of up to \$500 per claim
- Diagnostic Cover of up to \$500 per claim per claim

Customer Obligations

- Regular servicing of the vehicle is required to maintain the integrity of the vehicle and cover under the policy
- Please ensure that the vehicle is serviced in line with the manufacturer's requirements and intervals
- Where manufacturer requirements are not known, please refer to the policy wording for a full list of requirements



This document is a summary of cover and does not form part of the Insurance Policy. Limits apply to some items; please refer to the Insurance policy for terms and conditions.

Assurant Vehicle Care®

Components covered under Optimum Mechanical Breakdown Insurance

ENGINE

Cylinder Head
Head Gasket
Engine Block
Oil Seals & Gaskets
Camshafts
Camshaft Followers
Hydraulic Lifters
Push rods
Rocker Arms
Rocker Shafts
Valve Springs
Valves & Guides
Pistons
Piston Rings
Gudgeon Pins
Oil Filter Housing
Timing Chain
Timing Chain Tensioner
Timing Gears
Pulleys
Connecting Rods
Bearing Shells
Crankshaft
Oil Pump
Oil Pressure Relief Valve
Oil Pump Drive Gear & Shaft
Balance Shaft
Inlet Manifold
Oil when replaced at time of claim (Refer to Policy Wording)

FUEL SYSTEM

Air Flow Meter
Fuel Flow Sensor
Fuel Gauge Sender Unit
Fuel Injector Pump
Fuel Injectors
Fuel Lines
Fuel Pressure Regulator
Fuel Pressure Sensor
Fuel Pump
Glow Plug Relay
Glow Plugs
Lift Pump
Throttle Position Switch

COOLING SYSTEM

Engine Cooling Fan Motor
Heater Fan Motor
Heating Matrix
Oil Cooler Radiator
Seals & Gaskets
Temperature Sensor
Thermostat
Thermostat Housing
Viscous Fan Coupling
Water Pump

PROPSHAFT

Bearings
Couplings
Universal Joints
Constant Velocity Joints

MANUAL TRANSMISSION

Baulk Rings
Casing
Extension Shaft & Gears
Gear Lever & Linkages
Internal Bearings
Internal Shafts & Gears
Oil Seals & Gaskets
Selectors
Solenoids & Sensors
Synchro Hubs
Synchro Rings
Temperature Sensor
Master Cylinder
Slave Cylinder
Hydraulic Pipes & Hoses
Clutch Fork
Pedal Box Assembly
Oil when replaced at time of claim (Refer to Policy Wording)

AUTOMATIC TRANSMISSION

Bands & Belts
Casing
Clutches
Internal Bearings
Inhibitor Switch
Electronic Control Module
Oil Pump
Gears
Internal Shafts & Drums
Torque Converter
Flexi Plate
Valve Body
Shift Solenoids
Speed Sensors
Oil Cooler
Oil Seals & Gaskets
Gear Lever & Linkages
Oil when replaced at time of claim (Refer to Policy wording)

DIFFERENTIAL

Axles & Half Shafts
Casing
Clutches
Crown Wheel
Internal Bearings & Bushes
Limited Slip Assembly
Oil Seals & Gaskets
Pinion Gear
Side Gears
Spider Gears
Oil when replaced at time of claim (Refer to Policy Wording)

REAR SUSPENSION

Anti-Roll Bars
Axle Bearings
Springs
Wheel Bearings

FRONT SUSPENSION

Anti-Roll Bars
Ball Joints
Springs
Stub Axles
Wheel Bearings

ELECTRICAL

Alternator
Starter Motor
Ignition Coils
Factory Fitted Audio & Visual
Window Regulator
Window Regulator Motor
Electric Seat Motor
Voltage Regulator
Body Control Module
Electronic Ignition Module
Engine Control Module
Windscreen Wiper Motor
Windscreen Washer Motor
Convertible Roof Motor
Sunroof Motor
Transmission Control Module
Instrument Cluster
Column Stalk
Switches
Fuse Box
Horn

AIR CONDITIONING

Compressor
Condenser
Cooling Fan Motor
Electric Heater Element
Evaporator
Hoses & Pipes
Receiver Drier
Switches & Sensors
TX Valve

BRAKING SYSTEM

ABS Accumulator
ABS Module
ABS Pump
Disc Calipers
Equalizing Valves
Hand Brake Assembly
Master Cylinder
Pedal Box Assembly
Solenoids & Sensors
Vacuum Booster
Wheel Cylinders

TRANSFER BOX - 4 WHEEL DRIVE

Casing
Drive Chain
Internal Bearings
Internal Shafts & Gears
Oil Seals & Gaskets
Selector Shafts & Forks
Speed Sensor & Reluctor Wheel
Viscous Coupling
4WD Synchronizer
Oil when replaced at time of claim (Refer to Policy Wording)

SRS SYSTEM

SRS Air Bag ECU & Module
SRS Air Bag Sensors
SRS Air Bag Clock Springs

STEERING

Steering Column
Rack & Pinion
Steering Box
Steering Column Tilt Mechanism
Universal Joints
Steering Idler
Steering Angle Sensor
Power Steering Pump
Power Steering Motor
Tie Rods
Track Rods
Power Steering Fluid Reservoir
Oil Seals & Gaskets
Power Steering Unit
Hoses & Pipes
Oil when replaced at time of claim (Refer to Policy Wording)

FRONT WHEEL DRIVE ASSEMBLY

Inner Constant Velocity Joints
Outer Constant Velocity Joints
Drive Shafts
Final Drive Assembly
Hub Assemblies
Internal Bearings
Internal Shafts & Gears
Oil Seals & Gaskets
Transfer Casing
Transfer Gears
Oil when replaced at time of claim (Refer to Policy Wording)

TURBO UNIT

Turbine Compressor
Turbine Casing
Compressor Casing
Internal Bearings
Oil Seals & Gaskets
Pressure Relief Valve
Oil Feed Lines
Boost Control Valve
Boost Sensors
Waste Gate
Waste Gate Actuator
Intercooler

PARTS NOT COVERED

include Battery, exhaust system, wheels & tyres, cosmetic items, glass, struts, shock absorbers, seat mechanisms, brake shoe linings, disc pads and rotors, clutches and flywheel assemblies due to wear & tear. For full list of exclusions please refer to the policy wording.

This list of components covered is a reference guide for Assurant selling agents only. It is not for consumer distribution and does not form part of the terms and conditions of the Insurance Policy. Please refer to the policy wording for full Insurance Policy terms and conditions



ASSURANT®

Assurant Vehicle Care[®]

Kinetic Mechanical Breakdown Insurance

Summary of Cover

Qualifying Vehicles

Vehicles that qualify for cover under Kinetic Mechanical Breakdown Insurance include:

- BEV, PHEV and Hybrid vehicles
- With an odometer reading of up to 150,000km at the start of the policy, and
- Up to 15 years old at policy expiry

Claim Limits

The maximum claim limit is:

- The choice of \$15,000 or \$10,000
- Total maximum liability of the policy is the vehicle's Current Market Value

Policy Benefits

- Benefits Package - up to \$1,500 per claim for any combination of accommodation, travel, and vehicle repatriations costs
- Factory Audio
- Electric Mirrors
- Door Locks
- Sunroofs

Optional Benefits

- Roadside Assistance
- Additional Towing Allowance up to \$150 per claim
- Consumables Cover of up to \$500 per claim
- Diagnostic Cover of up to \$500 per claim per claim
- Cover for Uber/Taxi

Customer Obligations

- Regular servicing of the vehicle is required to maintain the integrity of the vehicle and cover under the policy
- Please ensure that the vehicle is serviced in line with the manufacturer's requirements and intervals
- Where manufacturer requirements are not known, please refer to the policy wording for a full list of requirements



This document is a summary of cover and does not form part of the Insurance Policy. Limits apply to some items; please refer to the Insurance policy for terms and conditions.

Assurant Vehicle Care®

Components covered under Kinetic Mechanical Breakdown Insurance

ENGINE

Cylinder Head
Head Gasket
Engine Block
Oil Seals & Gaskets
Camshafts
Camshaft Followers
Hydraulic Lifters
Push rods
Rocker Arms
Rocker Shafts
Valve Springs
Valves & Guides
Pistons
Piston Rings
Gudgeon Pins
Oil Filter Housing
Timing Chain
Timing Chain Tensioner
Timing Gears
Pulleys
Connecting Rods
Bearing Shells
Crankshaft
Oil Pump
Oil Pressure Relief Valve
Oil Pump Drive Gear & Shaft
Balance Shaft
Inlet Manifold
Oil when replaced at time of claim (Refer to Policy Wording)

FUEL SYSTEM

Air Flow Meter
Fuel Flow Sensor
Fuel Gauge Sender Unit
Fuel Injector Pump
Fuel Injectors
Fuel Lines
Fuel Pressure Regulator
Fuel Pressure Sensor
Fuel Pump
Glow Plug Relay
Glow Plugs
Lift Pump
Throttle Position Switch

COOLING SYSTEM

Engine Cooling Fan Motor
Heater Fan Motor
Heating Matrix
Oil Cooler Radiator
Seals & Gaskets
Temperature Sensor
Thermostat
Thermostat Housing
Viscous Fan Coupling
Water Pump

PROPSHAFT

Bearings
Couplings
Universal Joints
Constant Velocity Joints

MANUAL TRANSMISSION

Baulk Rings
Casing
Extension Shaft & Gears
Gear Lever & Linkages
Internal Bearings
Internal Shafts & Gears
Oil Seals & Gaskets
Selectors
Solenoids & Sensors
Synchro Hubs
Synchro Rings
Temperature Sensor
Master Cylinder
Slave Cylinder
Hydraulic Pipes & Hoses
Clutch Fork
Pedal Box Assembly
Oil when replaced at time of claim (Refer to Policy Wording)

AUTOMATIC TRANSMISSION

Bands & Belts
Casing
Clutches
Internal Bearings
Inhibitor Switch
Electronic Control Module
Oil Pump
Gears
Internal Shafts & Drums
Torque Converter
Flexi Plate
Valve Body
Shift Solenoids
Speed Sensors
Oil Cooler
Oil Seals & Gaskets
Gear Lever & Linkages
Oil when replaced at time of claim (Refer to Policy wording)

DIFFERENTIAL

Axles & Half Shafts
Casing
Clutches
Crown Wheel
Internal Bearings & Bushes
Limited Slip Assembly
Oil Seals & Gaskets
Pinion Gear
Side Gears
Spider Gears
Oil when replaced at time of claim (Refer to Policy Wording)

REAR SUSPENSION

Anti-Roll Bars
Axle Bearings
Springs
Wheel Bearings

SRS SYSTEM

SRS Air Bag ECU & Module
SRS Air Bag Sensors
SRS Air Bag Clock Springs

FRONT SUSPENSION

Anti-Roll Bars
Ball Joints
Springs
Stub Axles
Wheel Bearings

ELECTRICAL

Alternator
Starter Motor
Ignition Coils
Factory Fitted Audio & Visual
Window Regulator
Window Regulator Motor
Electric Seat Motor
Voltage Regulator
Body Control Module
Electronic Ignition Module
Engine Control Module
Windscreen Wiper Motor
Windscreen Washer Motor
Convertible Roof Motor
Sunroof Motor
Transmission Control Module
Instrument Cluster
Column Stalk
Switches
Fuse Box
Horn

AIR CONDITIONING

Compressor
Condenser
Cooling Fan Motor
Electric Heater Element
Evaporator
Hoses & Pipes
Receiver Drier
Switches & Sensors
TX Valve

BRAKING SYSTEM

ABS Accumulator
ABS Module
ABS Pump
Disc Calipers
Equalizing Valves
Hand Brake Assembly
Master Cylinder
Pedal Box Assembly
Solenoids & Sensors
Vacuum Booster
Wheel Cylinders

TRANSFER BOX - 4 WHEEL DRIVE

Casing
Drive Chain
Internal Bearings
Internal Shafts & Gears
Oil Seals & Gaskets
Selector Shafts & Forks
Speed Sensor & Reluctor Wheel
Viscous Coupling
4WD Synchronizer
Oil when replaced at time of claim (Refer to Policy Wording)

STEERING

Steering Column
Rack & Pinion
Steering Box
Steering Column Tilt Mechanism
Universal Joints
Steering Idler
Steering Angle Sensor
Power Steering Pump
Power Steering Motor
Tie Rods
Track Rods
Power Steering Fluid Reservoir
Oil Seals & Gaskets
Power Steering Unit
Hoses & Pipes
Oil when replaced at time of claim (Refer to Policy Wording)

FRONT WHEEL DRIVE ASSEMBLY

Inner Constant Velocity Joints
Outer Constant Velocity Joints
Drive Shafts
Final Drive Assembly
Hub Assemblies
Internal Bearings
Internal Shafts & Gears
Oil Seals & Gaskets
Transfer Casing
Transfer Gears
Oil when replaced at time of claim (Refer to Policy Wording)

TURBO UNIT

Turbine Compressor
Turbine Casing
Compressor Casing
Internal Bearings
Oil Seals & Gaskets
Pressure Relief Valve
Oil Feed Lines
Boost Control Valve
Boost Sensors
Waste Gate
Waste Gate Actuator
Intercooler

SPECIALISED COMPONENTS

EV & Hybrid Vehicle Battery
Battery Management Module
Drive Motor
Inverter
Converter
Electric Driven Brake Unit
High voltage connectors & wiring Junction box
Transmission / Reduction Gear

PARTS NOT COVERED

include Battery, exhaust system, wheels & tyres, cosmetic items, glass, struts, shock absorbers, seat mechanisms, brake shoe linings, disc pads and rotors, clutches and flywheel assemblies due to wear & tear. For full list of exclusions please refer to the policy wording.



Assurant Vehicle Care[®]

Pinnacle Mechanical Breakdown Insurance

Summary of Cover

Qualifying Vehicles

Vehicles that qualify for cover under Pinnacle Mechanical Breakdown Insurance include:

- Petrol, Diesel, Hybrid and EV vehicles
- With an odometer reading of up to 150,000 km at the start of the policy, and
- Up to 15 years old at policy expiry

Maximum Liability

The maximum liability limit is Current Market Value

Mechanical Claim Limits

The maximum claim limit is:

- Current Market Value for Cat 1 vehicles with an odometer reading up to 150,000km
- \$10,000 for all other qualifying vehicles

EV Battery Claim Limits

The maximum claim limit is:

- \$10,000 for all vehicles up to 10 years at time of loss
- \$5,000 for all vehicles over 10 years at time of loss

Policy Benefits

- Benefits Package - up to \$500 per claim for each of the following: accommodation, travel, and vehicle repatriation costs
- Peripheral cover for parts which have not failed but are prudent to repair
- Roadside Assistance
- Factory Audio

Customer Obligations

- Regular servicing of the vehicle is required to maintain the integrity of the vehicle and cover under the policy
- Please ensure that the vehicle is serviced in line with the manufacturer's requirements and intervals
- Where manufacturer requirements are not known, please refer to the policy wording for a full list of requirements



This document is a summary of cover and does not form part of the Insurance Policy. Limits apply to some items; please refer to the Insurance policy for terms and conditions.

Assurant Vehicle Care®

Components covered under Pinnacle Mechanical Breakdown Insurance

ENGINE

Cylinder Head
Head Gasket
Engine Block
Oil Seals & Gaskets
Camshafts
Camshaft Followers
Hydraulic Lifters
Push rods
Rocker Arms
Rocker Shafts
Valve Springs
Valves & Guides
Pistons
Piston Rings
Gudgeon Pins
Oil Filter Housing
Timing Chain
Timing Chain Tensioner
Timing Gears
Pulleys
Connecting Rods
Bearing Shells
Crankshaft
Oil Pump
Oil Pressure Relief Valve
Oil Pump Drive Gear & Shaft
Balance Shaft
Inlet Manifold
Oil when replaced at time of claim (Refer to Policy Wording)

FUEL SYSTEM

Air Flow Meter
Fuel Flow Sensor
Fuel Gauge Sender Unit
Fuel Injector Pump
Fuel Injectors
Fuel Lines
Fuel Pressure Regulator
Fuel Pressure Sensor
Fuel Pump
Glow Plug Relay
Glow Plugs
Lift Pump
Throttle Position Switch

COOLING SYSTEM

Engine Cooling Fan Motor
Heater Fan Motor
Heating Matrix
Oil Cooler Radiator
Seals & Gaskets
Temperature Sensor
Thermostat
Thermostat Housing
Viscous Fan Coupling
Water Pump

PROPSHAFT

Bearings
Couplings
Universal Joints
Constant Velocity Joints

MANUAL TRANSMISSION

Baulk Rings
Casing
Extension Shaft & Gears
Gear Lever & Linkages
Internal Bearings
Internal Shafts & Gears
Oil Seals & Gaskets
Selectors
Solenoids & Sensors
Synchro Hubs
Synchro Rings
Temperature Sensor
Master Cylinder
Slave Cylinder
Hydraulic Pipes & Hoses
Clutch Fork
Pedal Box Assembly
Oil when replaced at time of claim (Refer to Policy Wording)

AUTOMATIC TRANSMISSION

Bands & Belts
Casing
Clutches
Internal Bearings
Inhibitor Switch
Electronic Control Module
Oil Pump
Gears
Internal Shafts & Drums
Torque Converter
Flexi Plate
Valve Body
Shift Solenoids
Speed Sensors
Oil Cooler
Oil Seals & Gaskets
Gear Lever & Linkages
Oil when replaced at time of claim (Refer to Policy wording)

DIFFERENTIAL

Axles & Half Shafts
Casing
Clutches
Crown Wheel
Internal Bearings & Bushes
Limited Slip Assembly
Oil Seals & Gaskets
Pinion Gear
Side Gears
Spider Gears
Oil when replaced at time of claim (Refer to Policy Wording)

REAR SUSPENSION

Anti-Roll Bars
Axle Bearings
Springs
Wheel Bearings

FRONT SUSPENSION

Anti-Roll Bars
Ball Joints
Springs
Stub Axles
Wheel Bearings

ELECTRICAL

Alternator
Starter Motor
Ignition Coils
Factory Fitted Audio & Visual
Window Regulator
Window Regulator Motor
Electric Seat Motor
Voltage Regulator
Body Control Module
Electronic Ignition Module
Engine Control Module
Windscreen Wiper Motor
Windscreen Washer Motor
Convertible Roof Motor
Sunroof Motor
Transmission Control Module
Instrument Cluster
Column Stalk
Switches
Fuse Box
Horn

AIR CONDITIONING

Compressor
Condenser
Cooling Fan Motor
Electric Heater Element
Evaporator
Hoses & Pipes
Receiver Drier
Switches & Sensors
TX Valve

BRAKING SYSTEM

ABS Accumulator
ABS Module
ABS Pump
Disc Calipers
Equalizing Valves
Hand Brake Assembly
Master Cylinder
Pedal Box Assembly
Solenoids & Sensors
Vacuum Booster
Wheel Cylinders

TRANSFER BOX - 4 WHEEL DRIVE

Casing
Drive Chain
Internal Bearings
Internal Shafts & Gears
Oil Seals & Gaskets
Selector Shafts & Forks
Speed Sensor & Reluctor Wheel
Viscous Coupling
4WD Synchronizer
Oil when replaced at time of claim (Refer to Policy Wording)

SRS SYSTEM

SRS Air Bag ECU & Module
SRS Air Bag Sensors
SRS Air Bag Clock Springs

STEERING

Steering Column
Rack & Pinion
Steering Box
Steering Column Tilt Mechanism
Universal Joints
Steering Idler
Steering Angle Sensor
Power Steering Pump
Power Steering Motor
Tie Rods
Track Rods
Power Steering Fluid Reservoir
Oil Seals & Gaskets
Power Steering Unit
Hoses & Pipes
Oil when replaced at time of claim (Refer to Policy Wording)

FRONT WHEEL DRIVE ASSEMBLY

Inner Constant Velocity Joints
Outer Constant Velocity Joints
Drive Shafts
Final Drive Assembly
Hub Assemblies
Internal Bearings
Internal Shafts & Gears
Oil Seals & Gaskets
Transfer Casing
Transfer Gears
Oil when replaced at time of claim (Refer to Policy Wording)

TURBO UNIT

Turbine Compressor
Turbine Casing
Compressor Casing
Internal Bearings
Oil Seals & Gaskets
Pressure Relief Valve
Oil Feed Lines
Boost Control Valve
Boost Sensors
Waste Gate
Waste Gate Actuator
Intercooler

PARTS NOT COVERED

include Battery, exhaust system, wheels & tyres, cosmetic items, glass, struts, shock absorbers, seat mechanisms, brake shoe linings, disc pads and rotors, clutches and flywheel assemblies due to wear & tear. For full list of exclusions please refer to the policy wording.

This list of components covered is a reference guide for Assurant selling agents only. It is not for consumer distribution and does not form part of the terms and conditions of the Insurance Policy. Please refer to the policy wording for full Insurance Policy terms and conditions



ASSURANT®